

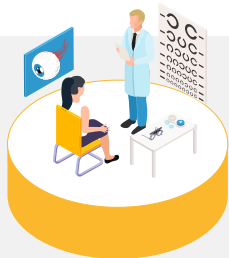
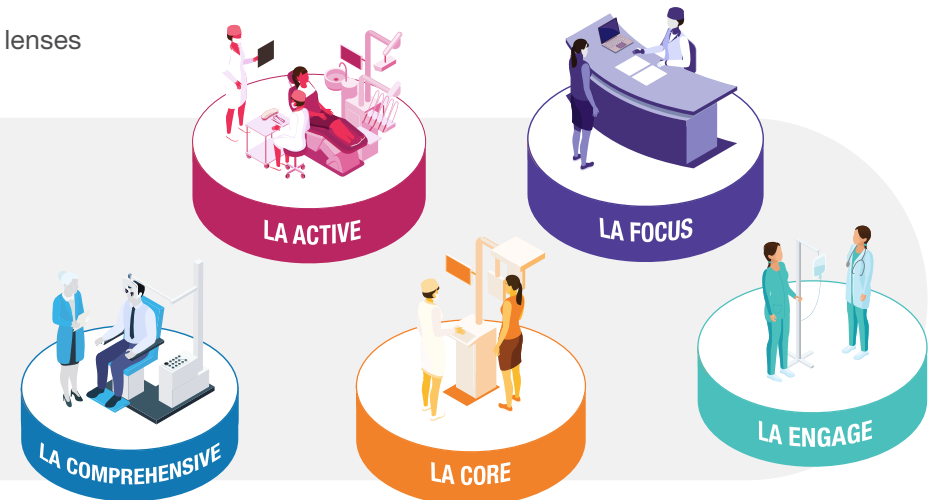
Optical Benefits



OVERVIEW

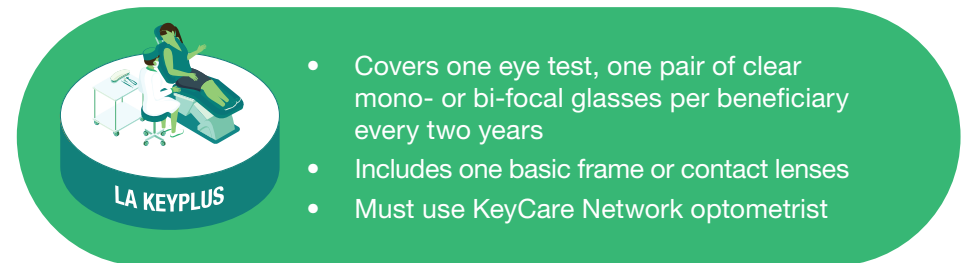
- Healthcare services related to eye health
- Covers lenses, frames, and contact lenses

- Optometry consultations covered from day-to-day benefits
- Frames, lenses, and contact lenses paid at 100% of the LA Health Rate, within limits
- Up to 20% off frames and lenses at providers in the Discovery Health Optometry Network (excludes contact lenses and professional fees)
- Submit proof of payment for reimbursement, subject to benefit limits
- Find network optometrists at www.lahealth.co.za



OPTICAL SURGERY

- We pay for ophthalmology procedures performed in hospital from your In-hospital Benefit up to 100% of the LA Health Rate. This includes cover for corneal cross linking
- We cover Radial Keratotomy, Excimer laser and refractive eye surgery procedures up to 100% of the LA Health Rate from your day-to-day benefits on all benefit options, except the LA KeyPlus Benefit Option



CONTACT US FOR MORE INFO:

TEL: 0860 103 933 | PO BOX: 652509 BENMORE 2010 | WWW.LAHEALTH.CO.ZA

WE'RE IN IT FOR YOUR HEALTH

