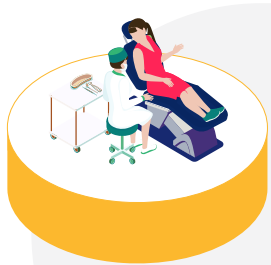


Dental Benefits



BASIC DENTAL TRAUMA

Covers any injury to the teeth, gums, jaws, tongue, lips or surrounding structures

LA KeyPlus Not covered

Available in- or out-of-hospital on all benefit options, except LA KeyPlus

Paid up to the LA Health Rate. Joint limit applies per person per year for in- or out-of-hospital care

Specific deductibles apply to the hospital/day clinic account for adults and children

Basket of care for professional fees and the cost and placement of implants, subject to authorisation



MAXILLO-FACIAL SURGERY

An operation to correct a disease, injury or defect of the face, jaw or mouth

Available on all benefit options.



Paid up to the LA Health Rate
Subject to authorisation and clinical criteria



Dental Benefits

IN-HOSPITAL COVER



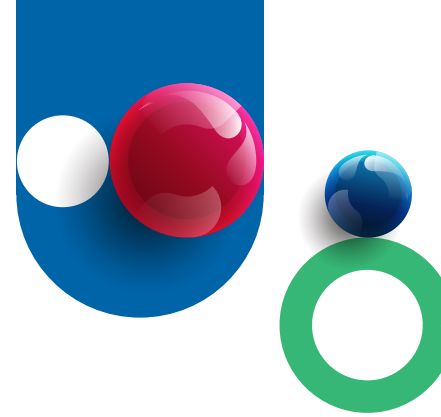
	LA COMPREHENSIVE	LA CORE	LA ENGAGE	LA ACTIVE	LA FOCUS	LA KEYPLUS
 <p>SPECIALISED DENTISTRY</p> <p>Braces, dentures, implants, crowns & bridges</p>	Limited and paid up to the LA Health Rate. Specific deductibles apply to the hospital/day clinic account for adults and children.					Not covered on this Option
	Related accounts for dentists, anaesthetists: Covered from the Major Medical Benefit:					
	Subject to joint limit for specialised dentistry (in- and out-of-hospital)		Basic dental services that form part of the specialised treatment, obtained from a Network Dentist, unlimited, subject to a list of procedures. Related accounts for non-Network dentists, anaesthetists. etc., limited per person per year			
 <p>BASIC DENTISTRY</p> <p>Routine check-ups, cleaning, fillings, extractions and preventative measures to maintain oral health</p>	Limited and paid up to the LA Health Rate. Specific deductibles apply to the hospital/day clinic account for adults and children.					Not covered on this Option
	Related accounts for dentists, anaesthetists:					
	Subject to joint limit for basic dentistry (in- or out-of-hospital). Paid from Medical Savings or Above Threshold Benefit		Paid from Medical Savings or Extended Day-to-day Benefit	Paid from Medical Savings		





WE'RE IN IT FOR YOUR HEALTH

Dental Benefits

OUT-OF-HOSPITAL COVER



	LA COMPREHENSIVE	LA CORE	LA ENGAGE	LA ACTIVE	LA FOCUS	LA KEYPLUS
 <p>SPECIALISED DENTISTRY</p> <p>Braces, dentures, implants, crowns & bridges</p>	<p>Subject to joint limit for specialised dentistry in- or out-of-hospital. Covered from Medical Savings and Above Threshold Benefit</p>	<p>Covered from Medical Savings or Extended Day-to-day Benefit</p>			<p>Paid from MSA. Basic dentistry provided by a dentist in the LA Focus Dental Network as part of the specialised dentistry procedure, paid from Major Medical Benefit</p>	<p>Not covered on this Option</p>
 <p>BASIC DENTISTRY</p> <p>Routine check-ups, cleaning, fillings, extractions and preventative measures to maintain oral health</p>	<p>Subject to joint limit for basic dentistry (in- and out-of-hospital). Covered from Medical Savings and Above Threshold Benefit</p>	<p>Covered from Medical Savings or Extended Day-to-day Benefit</p>	<p>Partially covered from the Major Medical Benefit; then from Medical Savings or Extended Day-to-day Benefit</p>		<p>Paid from Major Medical Benefit if obtained from a Dentist in the DSP Network. Non-DSP services paid from Medical Savings</p>	<p>List of procedures covered at a dentist in the KeyCare Network</p>



WE'RE IN IT FOR YOUR HEALTH