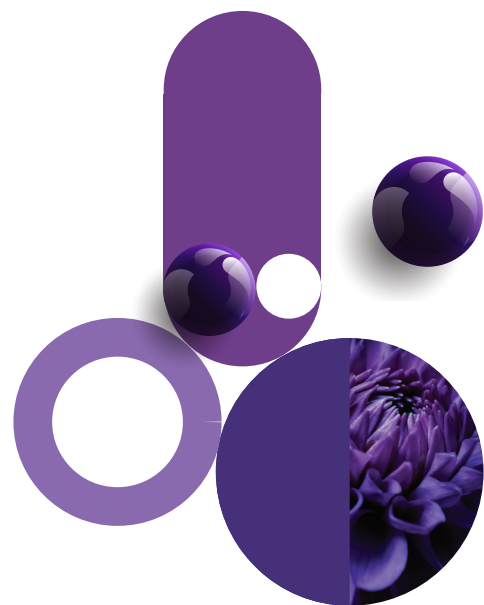


LA
FOCUS
FOCUS
S



2026
LA Focus

**NETWORK HOSPITALS
AND DAY CLINICS**





Eastern Cape

All hospitals in this province are network hospitals for the LA Focus Option

Free State

Bethlehem

- Mediclinic Hoogland

Bloemfontein

- Life Rosepark Hospital
- Netcare Pelonomi Private Hospital
- Netcare Universitas Private Hospital
- Pasteur Eye Hospital*

Harrismith

- Busamed Harrismith Hospital

Kroonstad

- Netcare Kroon Hospital

Sasolburg

- Netcare Vaalpark Hospital

Welkom

- Mediclinic Welkom

Gauteng

Benoni

- Life The Glynnwood Hospital

Brakpan

- Life Dalview Hospital

Germiston

- Life Roseacres Hospital

Heidelberg

- Life Suikerbosrand Hospital

Johannesburg

- Clinix Selby Park Hospital*
- Life Brenthurst Hospital
- Nelson Mandela Children's Hospital
- Netcare Garden City Clinic

Lenasia

- Lenmed Health Ahmed Kathrada Private Hospital
- Lenmed Daxina Private Hospital

Mabopane

- Mediclinic Legae

Midrand

- Life Carstenhof Hospital

Pretoria

- Life Eugene Marais Hospital
- Mediclinic Medforum
- Netcare Jakaranda Hospital*
- Optimed Eye and Laser Clinic*
- Zuid Afrikaans Hospital

Randfontein

- Lenmed Randfontein Private Hospital
- Life Robinson Private Hospital

Saxonwold

- Oxford Maternity Unit

Soshanguve

- Botshilu Private Hospital*

Soweto

- Clinix Dr SK Matseke Memorial Hospital
- Clinix Tshepo-Themba Private Hospital

Springs

- Life Springs Parkland Hospital

Tembisa

- Lenmed Health Zamokuhle Private Hospital

Vanderbijlpark

- Mediclinic Emfuleni

Vereeniging

- Clinix Naledi-Nkanyezi Private Hospital
- Midvaal Private Hospital

Vosloorus

- Clinix Botshelong Empilweni Private Hospital

KwaZulu-Natal

All hospitals in this province are network hospitals for the LA Focus Option

Limpopo

Lephalale

- Mediclinic Lephalale

Polokwane

- Mediclinic Limpopo

Thabazimbi

- Mediclinic Thabazimbi

Tzaneen

- Mediclinic Tzaneen

Mpumalanga

Barberton

- RH Phodiclinic

Emalahleni

- Life Cosmos Hospital

Ermelo

- Mediclinic Ermelo

Middelburg

- Life Midmed Hospital

Nelspruit

- Mediclinic Nelspruit

Piet Retief

- RH Piet Retief Private Hospital

Trichardt

- Mediclinic Highveld

Northern Cape

All hospitals in this province are network hospitals for the LA Focus Option

North West

Brits

- Mediclinic Brits

Carletonville

- The Fountain Private Hospital

Klerksdorp

- Life Anncron Hospital

Mafikeng

- Clinix Victoria Private Hospital*

Potchefstroom

- Mediclinic Potchefstroom

Rustenburg

- Life Peglerae Hospital

Vryburg

- Vryburg Private Hospital

Western Cape

All hospitals in this province are network hospitals for the LA Focus Option

LESOTHO

- Willie Hospital*



LIST OF HOSPITALS SUBJECT TO CHANGE

This list of hospitals is subject to change. You will always find the most updated list on the Scheme's website at www.lahealth.co.za



LA Focus Network Day Clinics

Eastern Cape

All day clinics in this province are network providers for the LA Focus Option

Free State

Bethlehem

- Bethlehem Medical Centre

Bloemfontein

- Citymed Theatre
- Cure Day Clinics Bloemfontein
- Mediclinic Bloemfontein Day Clinic
- Stirling Hospital

Welkom

- Welkom Medical Centre

Gauteng

Alberton

- Optimed
- The Ear and Eye Clinic

Benoni

- Lakefield Surgical Centre
- MMC Benoni Day Hospital
- The Healthy Eye

Boksburg

- Advanced East Rand Day Hospital
- Boksburg Medical And Dental Centre

Centurion

- Centurion Day Hospital
- Centurion Eye Hospital

Germiston

- Germiston Medical And Dental Centre

Irene

- Intercare Day Hospital Irene

Johannesburg

- Centre of Advanced Medicine
- Cure Day Clinics Fourways

- DR GM Pitje Day Hospital
- Fordsburg Clinic
- Johannesburg Eye Hopital
- Melrose Surgical Centre
- Visiomed Eye Laser Clinic

Kempton Park

- Birchmed Surgical Clinic
- Ekurhuleni Surgiklin Day Clinic

Mulbarton

- Twenty Twenty Eye Surgery Centre

Olifantsfontein

- Cure Day Clinics – Midstream

Pretoria

- Constantia Park Medical and Dental Centre
- Cure Day Clinics - Erasmuskloof
- Intercare Day Hospital Hazeldean
- Kilnerpark Narko Clinic
- Life Brooklyn Day Hospital
- Life Pretoria North Surgical Centre
- Medkin Clinic
- Pretoria Eye Institute
- Waterkloof Surgical Centre
- ZAH Day Hospital

Roodepoort

- Constantia Clinic
- Cure Day Hospital Wilgeheuwel
- Life Wilgeheuwel Day Clinic
- Mayo Clinic
- Medgate Day Clinic

Sandton

- Sandton Day Clinic
- Sandhurst Eye Centre

Soweto

- Apex Surgi-Centre Soweto

Vanderbijlpark

- Ocumed

Vereeniging

- Visiclin Eye Clinic

Kwazulu-Natal

All day clinics in this province are network providers for the LA Focus Option

Limpopo

Polokwane

- Mediclinic Limpopo Day Clinic

Modimolle

- Hope for the blind Eye clinic

Thohoyandou

- Mveledzo Day Hospital

Mpumalanga

Emalahleni

- Advanced De La Vie Day Hospital
- Highveld Eye Clinic

Nelspruit

- Cure Day Hospital Mbombela
- Mediclinic Nelspruit Day Clinic

Northern Cape

All day clinics in this province are network providers for the LA Focus Option

North West

Klerksdorp

- Daleside Day Hospital

Potchefstroom

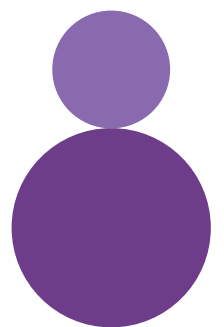
- Potchefstroom Medical And Dental Centre

Rustenburg

- Rustenburg Private Eye Clinic

Western Cape

All day clinics in this province are network providers for the LA Focus Option



This list of hospitals is subject to change.

You will always find the most updated list on the Scheme's website at www.lahealth.co.za.

If there is any discrepancy between this document and the registered Scheme Rules, the Rules will always apply.

● CLIENT SERVICES 0860 103 933 ● SERVICE@LAHEALTHMS.CO.ZA ● WWW.LAHEALTH.CO.ZA

 LA-Health  LA Health

